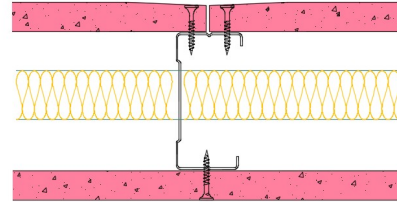


70-S-56(25) - SPEEDLINE System Data Sheet - Version V1 (24-10-23)

SPEEDLINE 70mm 'C' Stud Partition @600mm Ctrs,
with Siniat GTEC 15mm Fire Board each side,
25mm APR



System Performance Breakdown

Fire Resistance:

BS476 Part 22:1987:

Test Ref & Date or Applied Ref & Report:

Max Height:

Thickness:

Duty Grade: BS 5234: Part 2:1992:

Sound Insulation:

60/60 Minutes (Integrity/Insulation).

BTC 17443F - BRE Report P102396-1011C

Refer to Speedline Specification Clause

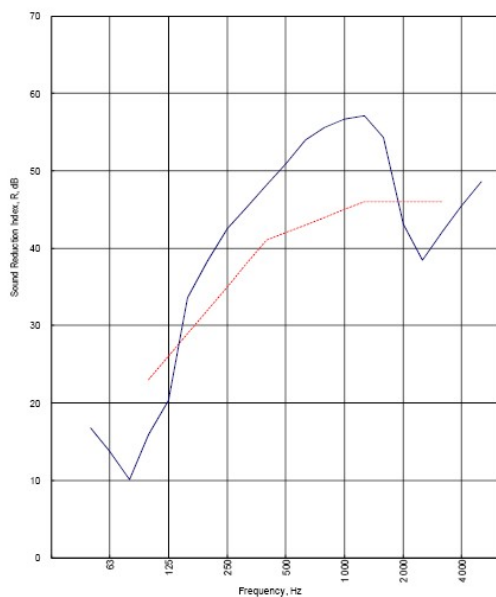
102 mm. (At Base Track, Excluding Finishes)

Heavy - Annexes A-F

42 R_wdB, Date Tested or Assessed Against - 06/07/2016

Test Code:
H19645AA
Test Date:
06/07/2016

Freq. Hz	R dB
50	16.8
63	13.7
80	10.1
100	15.9
125	20.3
160	33.6
200	38.3
250	42.5
315	45.3
400	48.2
500	50.9
630	54.0
800	55.6
1 000	56.7
1 250	57.1
1 600	54.3
2 000	43.1
2 500	38.5
3 150	42.1
4 000	45.5
5 000	48.6



Rating according to BS EN ISO 717-1:2013 **R_w (C;Ctr) = 42 (-2;-8) dB**
 Max dev. 7.5 dB at 2 500 Hz

Evaluation based on laboratory measurement results obtained by an engineering method:

C ₅₀₋₃₁₅₀ = -4 dB	C ₅₀₋₅₀₀₀ = -3 dB	C ₁₀₀₋₅₀₀₀ = -1 dB
C _{tr,50-3150} = -14 dB	C _{tr,50-5000} = -14 dB	C _{tr,100-5000} = -8 dB


TESTED AT ONE OF THE UKAS ACCREDITED LABORATORIES BELOW

B.T.C (H-Ref on Graph) 

B.R.E 

AIRO 

S.R.L 



Customer: Voestalpine Metsec Plc Dry Lining

BTC 19645A: Page 11 of 14

